



MONTHLY MEMBERSHIP PROGRESS REPORT

District 322C1

Results as of: 07/31/2018

GMT: SWADESH RANJAN SAHA

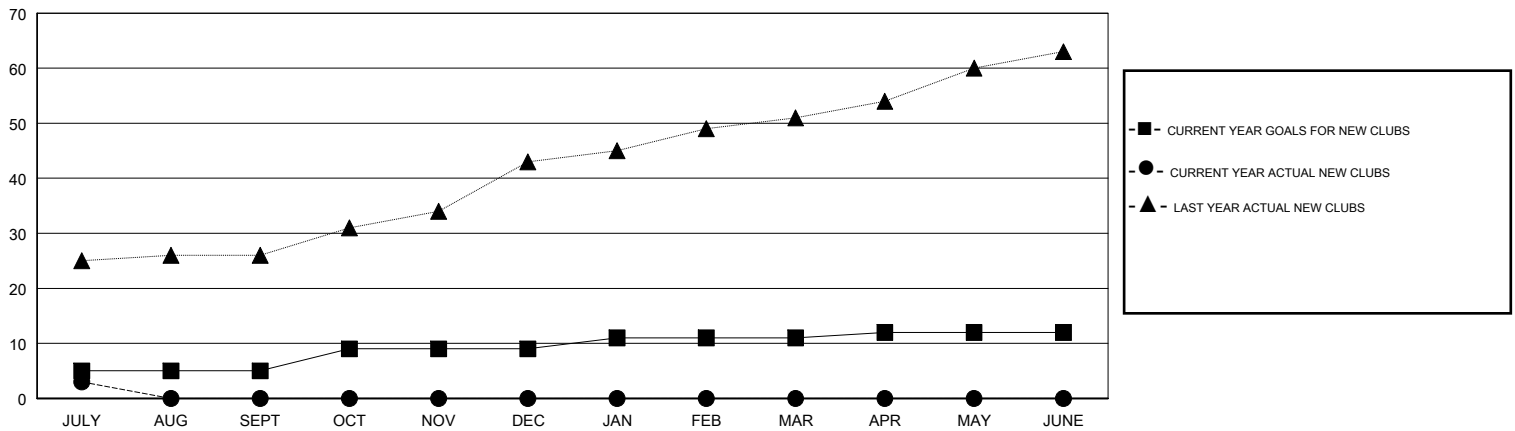
LOCATION INDIA

GMT CA

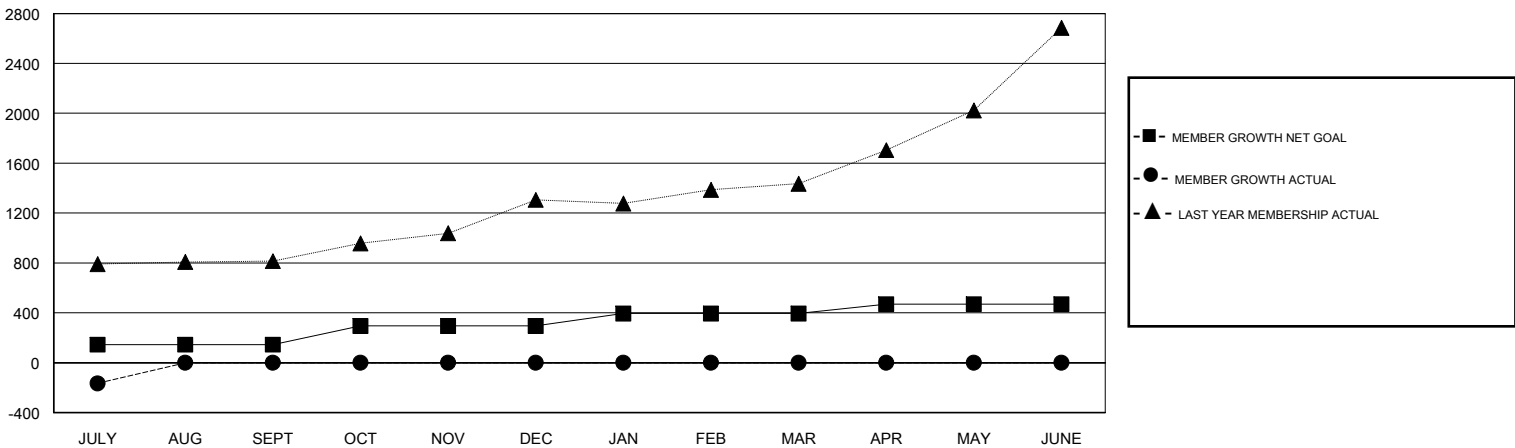
Clubs			
RESULTS FOR 2018-2019			
QUARTER	NEW CLUB GOAL	NEW CLUBS	DROPPED CLUBS
JULY/AUG/SEPT	5	3	1
OCT/NOV/DEC	4	0	0
JAN/FEB/MAR	2	0	0
APR/MAY/JUNE	1	0	0

Members			
RESULTS FOR 2018-2019			
QUARTER	MEMBER GROWTH NET GOAL	MEMBER GROWTH ACTUAL	DROPPED MEMBERS ACTUAL (including transfers)
JULY/AUG/SEPT	145	102	264
OCT/NOV/DEC	150	0	0
JAN/FEB/MAR	100	0	0
APR/MAY/JUNE	75	0	0

GOALS AND ACTUAL NEW CLUBS CUMULATIVE



GOALS AND ACTUAL MEMBERS CUMULATIVE



DROPPED CLUBS: 1	21 CLUBS OF 166 ADDED 1 OR MORE NEW MEMBERS	<u>GENDER DISTRIBUTION</u>	
DROPPED MEMBERS		MALE	4,286 (75.54%)
DECEASED	1	FEMALE	1,388 (24.46%)
CLUB CANCELLED	1	Women Percentage Fiscal Year Goal: 28%	
OTHER	262	TOTAL FAMILY UNIT MEMBERS	2,802
TOTAL	264	FAMILY MEMBERS PAYING HALF DUES	1,620

[CLICK HERE FOR CUMULATIVE MEMBERSHIP DATA](#)